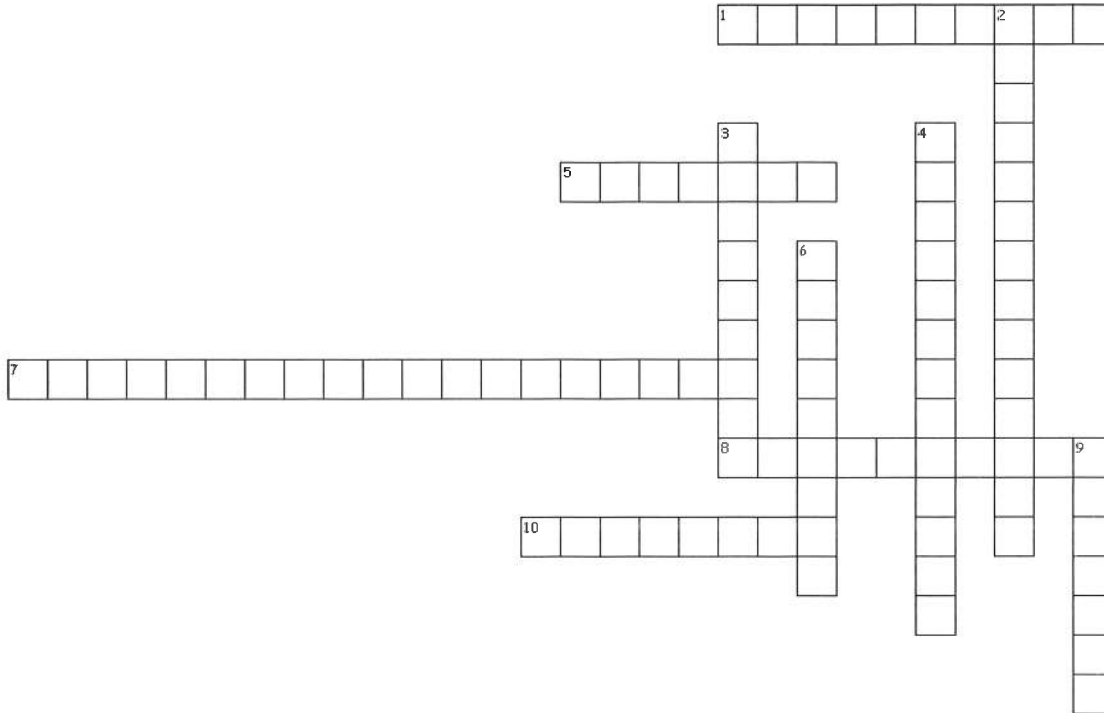




Anatomy & Physiology Review for ICD-10-CM/PCS
Skeletal System

1. Complete the crossword by answering the questions on the different types and functions of bones.



Across

- 1. Protects the brain, spinal cord and thoracic structures
- 5. Allows the body to maintain an erect posture
- 7. Contains bone marrow where hematopoietic cells are found
- 8. Cube-shaped
- 10. Muscles attach to some bones and function as levers to produce movement

Down

- 2. Complex
- 3. Divided into diaphysis in the middle and two epiphyses at the ends
- 4. Found in tendons that may be subjected to compression and tension
- 6. Thin in shape
- 9. Stores calcium and phosphorous



2. Match the number of bones in the right column with the structure in the left column. (Numbers may be used more than once)

Axial Skeleton

<u>Structure</u>	<u>Number of Bones</u>
___ Cranium	14
___ Face	24
___ Hyoid	26
___ Auditory Ossicles	1
___ Vertebral Column	6
___ Sternum	8
___ Ribs	

Appendicular Skeleton

<u>Structure</u>	<u>Number of Bones</u>
___ Clavicle	14
___ Scapula	2
___ Humerus	10
___ Ulna	28
___ Radius	16
___ Carpals	
___ Metacarpals	
___ Upper Limb Phalanges	
___ Pelvic Girdle	
___ Femur	
___ Patella	
___ Fibula	
___ Tibia	
___ Tarsals	
___ Metatarsals	
___ Lower Limb Phalanges	



3. Label all structures indicated on the diagram below.

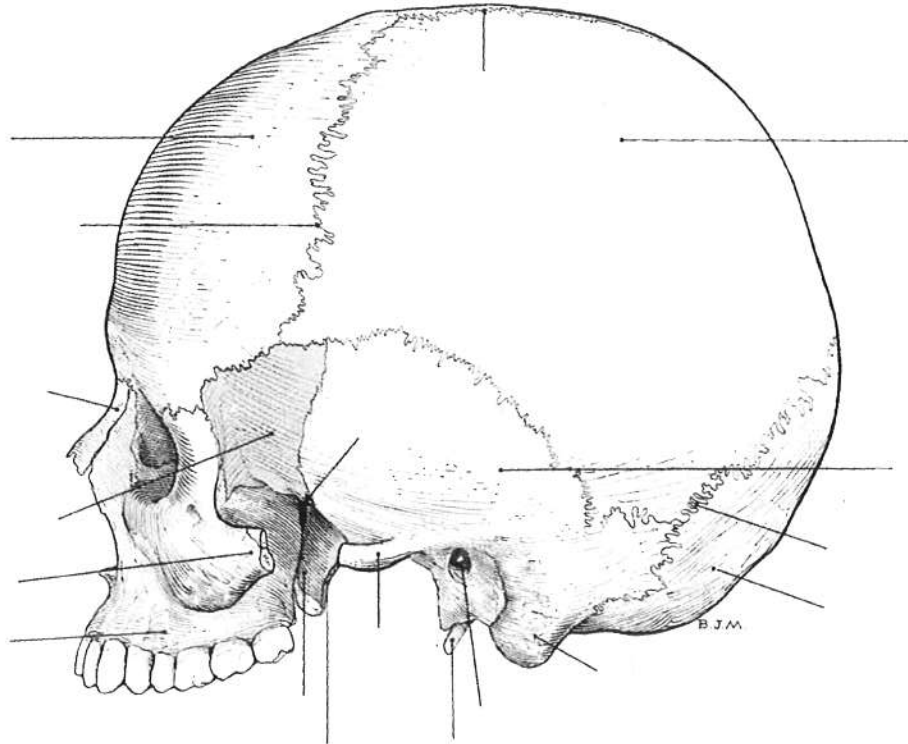


Fig. 5-3. Lateral view of the skull. Note the three major sutures of the calvarium

4. Name the type of joint described in each statement.

1. Moves only in a vertical plane.
2. Has one concave and one convex articulating surface and movement can take place in only one direction.
3. Has extensive movement in almost any direction or plane.
4. Has essentially flattened articulate surfaces allowing for sliding movement in all directions.



5. Label all structures indicated on the diagram below.

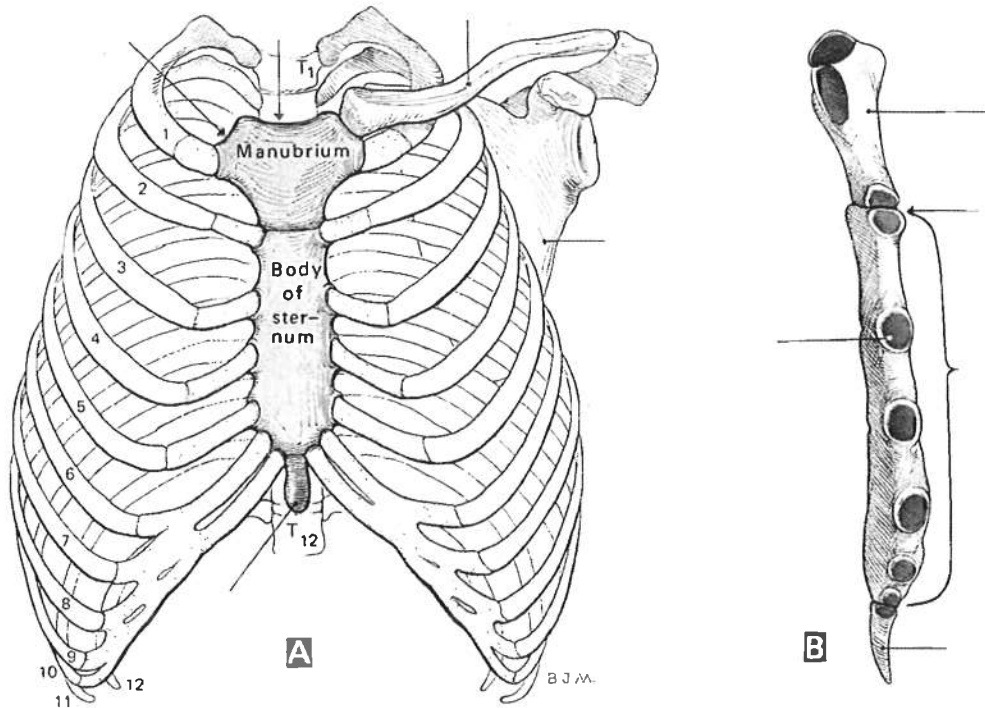


Fig. 5-14. The thoracic cage. A. Skeletal components. Cartilage is shown in stipple. B. The sternum, lateral aspect. Articular facets for the costal cartilages are highlighted in color.

Fig. 5-14. The thoracic cage. A. Skeletal components. Cartilage is shown in stipple. B. The sternum, lateral aspect. Articular facets for the costal cartilages are highlighted.



6. Label all structures indicated on the diagram below.

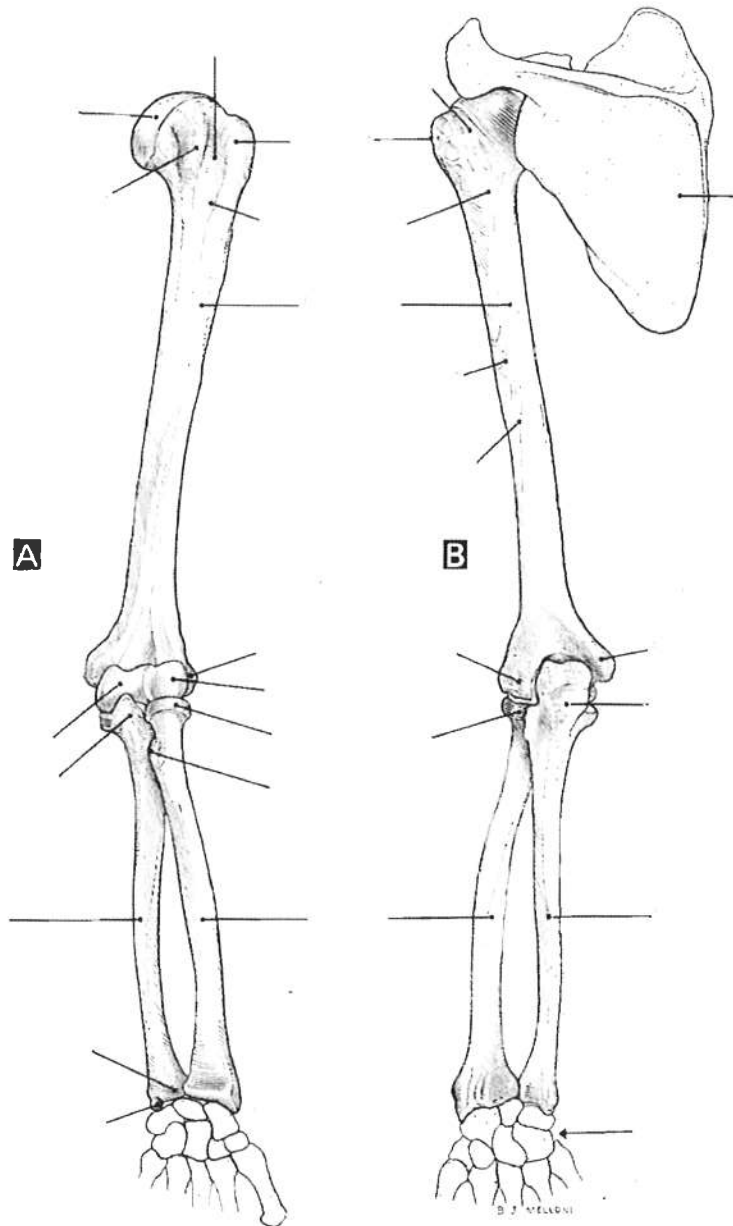


Fig. 5-18. Bones of the upper extremity. A. Anterior aspect. B. Posterior aspect



7. Find all skeletal components of the hand (12 words) listed on the Skeletal System Anatomy PowerPoint slide 29.

R C W C R K N M Z Y T Y D L U
E T A M A H M E S R I I U W U
O T Y U F D D T I R O N K I M
X Y C Y E O F A Y H A B M T U
N G B A W I N C P T C S A W A
D A W X P G I A E E R E G G B
W I V Y U I C R A E A G O E I
I Z O L H S T P X E D N B S G
T T A Z I K L A M D I A I Y H
X R J W E R N L T X U L N F Y
P O Z F L P N S U E S A W K C
M U I Z E P A R T A W H H D X
T P I S I F O R M A N P A J K
F J Z Q L C U S T A G L Z H A
G Z M D B N J G Q E N T U U B

8. Unscramble the words below.

LUTSA
NIVAULCRA
UMIFCOSNER
TAASASMERTL
GANAEPLHS
ACCUASENL
BOUCDI



9. Label all structures indicated on the diagram below.

